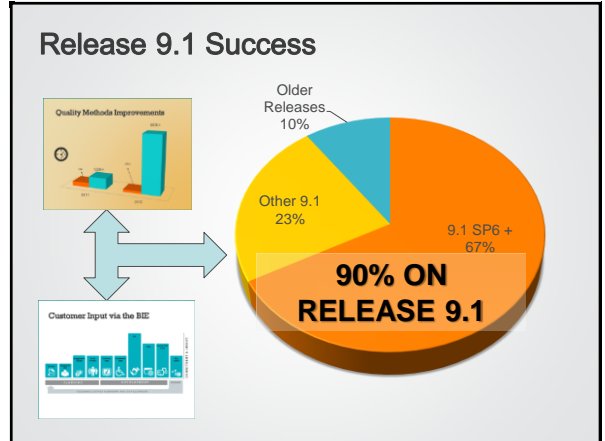
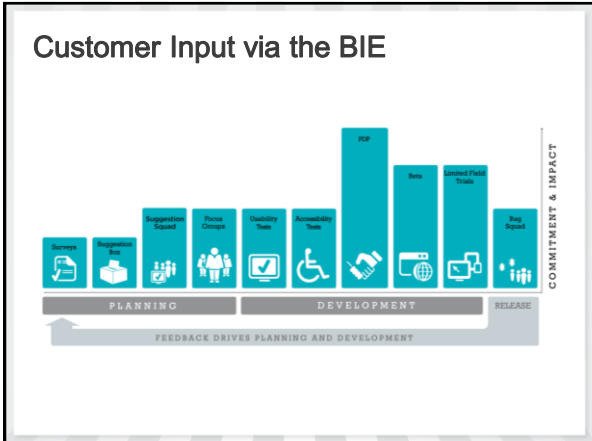


Blackboard Learn™

Scottish Blackboard User Group Product Roadmap

Stephen Clarke



Learning and Teaching Efficiency

Blackboard Learn

Updated Content Editor

urses Communities Content Outcomes System Admin

Create Item

Indicates a required field. Cancel Submit

1. Content Information

Name:

Color of Name: Medium Azure-Cyan

Text

Paragraph | Arial | 11pt

What do Graphic Designers do?

Graphic designers work with drawn, painted, photographed, or computer-generated images (pictures), but they also design the letterforms that make up various typefaces found in movie credits and TV ads in books, magazines, and menus, and even on computer screens. Designers create, choose, and organize these elements—typography, images, and the so-called “white space” around them to communicate a message. Graphic design is a part of your daily life. From humble things like gum wrappers to huge things like billboards to the T-shirt you’re wearing, graphic design informs, persuades, organizes, stimulates.


Path:

Words: 99

Full Frame Editing

Chapter 7: Photosynthesis

Photosynthesis is the process of converting light energy to chemical energy and storing it in the bonds of sugar. This process occurs in plants and some algae (Kingdom Protista). Plants need only light energy, CO₂, and H₂O to make sugar. The process of photosynthesis takes place in the chloroplasts, specifically using chlorophyll, the green pigment involved in photosynthesis.



The simplest way these are arranged is in photosynthetic bacteria, where these proteins are held within the plasma membrane.^[6] However, this membrane may be tightly folded into cylindrical sheets called thylakoids,^[6] or bunched up into round vesicles called intracytoplasmic membranes.^[6] These structures can fill most of the interior of a cell, giving the membrane a very large surface area and therefore increasing the amount of light that the bacteria can absorb.^[6] In plants and algae, photosynthesis takes place in organelles called chloroplasts. A typical plant cell contains about 10 to 100 chloroplasts. The chloroplast is enclosed by a membrane. This membrane is composed of a phospholipid inner membrane, a phospholipid outer membrane, and an intermembrane space between them.

Mathematics Editor

Mathematics Editor interface showing a math input field with the equation $\sqrt{8} = 2$ and a rich text editor below it.

Assessment Updates

1. Question

Question Title

Question Text

Who made this famous philosophical statement - "I think, therefore I am"?

Path: p Words: 11

2. Answers

Add answers for all possible correct responses.

Number of Answers: 1

Answer 1: Pattern Match, "deCart." Contains: <http://www.wiki.com/wiki/pattern-match> Exact Match

Test Item Analysis

Item Analysis : Fitness Quiz

Fitness Quiz Analysis Last Run: June 26, 2012 3:52 PM. Run Item Analysis again to display the latest.

Possible Points	Possible Questions	Attempts In Progress	Submissions	Avg Score	Average Time	Discrimination	Difficulty	Graded Submissions	Avg Score	Std Dev	Std Error
91.0	63	0	237	55.58	0 hr 35 min	0.19	0.39	0.03	0.19	0.39	0.03

Filter Questions

Question	Question Type	Discrimination	Difficulty	Graded Submissions	Avg Score	Std Dev	Std Error
A common definition of wellness is not just the absence of illness, but a:	Multiple Choice	-0.08	18.57%	237	0.19	0.39	0.03
If I sign up for 1.5 units (76.5 hrs.) but only complete 52 hours, I will still...	True/False	0.26	13.92%	237	0.14	0.35	0.02
The long standing recommendations for intensity in weight training to develop...	Multiple Choice	0.47	40.93%	237	0.41	0.49	0.03
Conformalal endurance ran best for discomb...	Multiple	0.44	45.99%	217	0.46	0.1	0.03

Course Evaluations and Enterprise Surveys

Select Recipients

1. Select Recipients

Send to: Courses Organizations

Select Terms: Students Instructors Teaching Assistants Course Builders Graders

Approximate Recipients: 157

Course Evaluations and Enterprise Surveys

Survey Results for Business Group Survey

Total Survey Recipients: 475

Response Rate for Fall 2010: 100% (178 Total Participants)

Response Rate for Fall 2011: 75% (115 Total Participants)

Response Rate for Fall 2012: 100% (210 Total Participants)

Question Response Summary: 65% Positive Responses, 19% Neutral Responses, 16% Negative Responses

Detailed Question Results

The business program at Monmouth University fully met my needs?

OVERALL AVERAGE: 63%

Year	Strongly Agree	Agree	Disagree	Strongly Disagree	Average Score
Fall 2010	100	70	40	10	70%
Fall 2011	18	30	8	32	65%
Fall 2012	15	100	0	0	57%

OVERALL AVERAGE: 50%

