

# My Blackboard & Social Learning

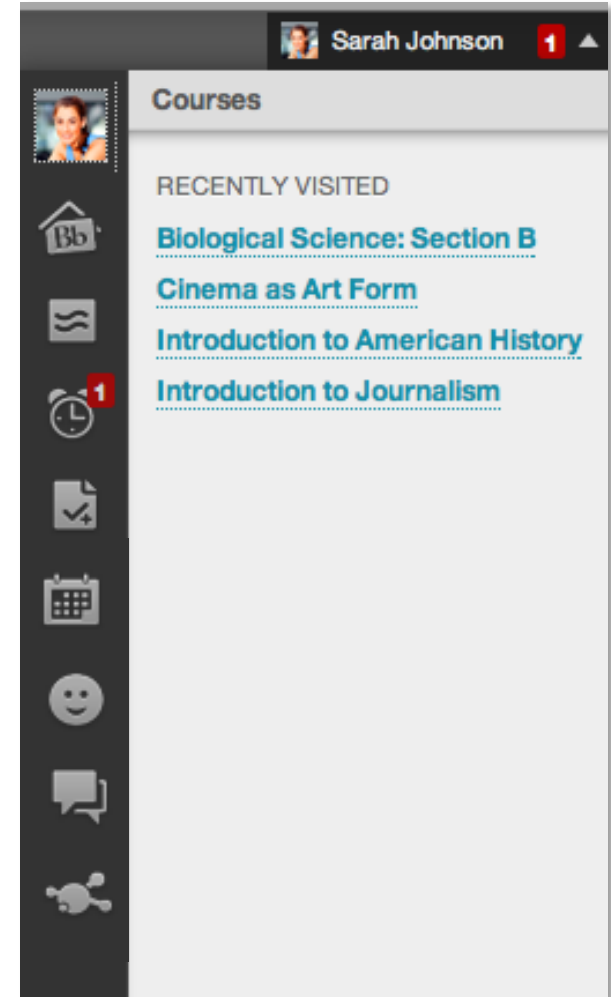
February 2014



# What is Social Learning in Blackboard?

My Blackboard includes:

- Home
- Profiles
- Posts
- Updates
- My Grades / Retention Centre
- Calendar
- People
- Spaces
- Messages



# What is Social Learning in Blackboard?

- Home
- Profiles
- Posts
- Updates
- My Grades / Retention Centre
- Calendar
- People
- Spaces
- Messages



Default option:  
Cloud Connector **off**

# What is Social Learning in Blackboard?

- Home
- Profiles (basic)
- Posts
- Updates
- My Grades / Retention Centre
- Calendar
- People (institution only)
- Spaces
- Messages



Cloud tools only:  
Cloud Connector **on**



# What is Social Learning in Blackboard?

- Home (enhanced)
- Profiles (enhanced)
- Posts (enhanced)
- Updates
- My Grades / Retention Centre
- Calendar
- People (enhanced)
- Spaces
- Messages



Social learning tools:  
Cloud Connector **on**  
Social Tools **on**  
(requires Community  
Engagement licence)

# What did we change for the UK market?

You told us:

- *Users should be able to choose to participate*
- *They should also be able to choose not to*
- *'Classmates' in courses and organisations are not always classmates to the user*
- *Social is not appropriate for all Blackboard users*

# SOCIAL LEARNING PROFILE OPT-IN

Available Now



Home Courses Organisations Con

Notificatio

Personalise

our On  
learning  
ns called  
Getting  
with a feature

## Blackboard Profile Terms of Service

### Blackboard Social End User Terms of Service

**IMPORTANT--PLEASE READ CAREFULLY.** These Blackboard Social End User Terms of Service ("Terms") is a legal agreement between Blackboard Inc., a Delaware corporation ("Blackboard", "us", or "we") and you, as recipient of the Blackboard Social software product and services. These Terms govern your access to and use of the Blackboard Social software product and services (the "Services"), and any information, text, graphics, photos or other materials uploaded, downloaded or appearing on the Services (collectively referred to as "Content"). Your access to and use of the Services are conditioned on your acceptance of and compliance with these Terms. By accessing or using the Services you agree to be bound by these Terms.

#### 1. Basic Terms

You are responsible for your use of the Services, for any Content you post to the Services, and for any consequences thereof. The Content you submit, post, or display will be able to be viewed by other

I have read these terms and agree to them and am at least 13 years of age.

**If you decline the Terms of Service, your existing profile and any activity data (e.g. profile wall posts and messages) will be permanently removed.**

Click **Agree** to agree to the Terms of Service and access your profile.  
Click **Decline** to delete your existing profile.

Decline

Agree

[View the Blackboard Demo policy statement](#)

Your institutional policy statement goes here - you can add as much or as little detail as you need.

Users must accept the terms of this statement before they can set up a cloud profile through your institution.

My Tasks:

No tasks due.

# DELETE SOCIAL LEARNING PROFILE

Available Now



## Delete Your Blackboard Profile?

If you delete your Blackboard profile, you will **no longer be able to access your profile** from any of your Blackboard accounts.



You may not be able to access some content in your courses.



You will not have access to the People page and other users' Blackboard profiles.

Others will not be able to find or view you on the People page.



You will not have access to Messages. Your previous messages will be attributed to \"Deleted User\".



You will not have access to Spaces. Your previous Spaces activity will be attributed to \"Deleted User\".

If you are the only manager of a space, that space will be deleted.



Any discussion posts and submissions made against xpLor content will be attributed to \"Deleted User\".

If you delete your Blackboard profile, you can create a new Blackboard profile at any time. However, any previous profile information and activity will be lost.

**Are you sure you want to delete your Blackboard profile?**

No, save my profile

Yes, delete my profile

# HIDE COURSES/ORGS FROM PEOPLE PAGE

Available Now



## 3. Exclude Selected Courses and Organizations

Select courses and organizations to exclude from the People page.

Select courses      Select organizations

Remove from list

| <input type="checkbox"/> Status | Course/<br>Organization ID | Course/Organization Name | Date Created | Instructor/Leader Username | Instructor/Leader Name | Data Source Key |
|---------------------------------|----------------------------|--------------------------|--------------|----------------------------|------------------------|-----------------|
| <input type="checkbox"/>        | FIRST                      | First Years              | 5/23/2013    | adumbledore                | Albus Dumbledore       |                 |
| <input type="checkbox"/>        | HOG                        | Hogwarts                 | 5/23/2013    | adumbledore                | Albus Dumbledore       |                 |
| <input type="checkbox"/>        | SECOND                     | Second Years             | 5/23/2013    | mmcgonagall                | Minerva McGonagall     |                 |
| <input type="checkbox"/>        | THIRD                      | Third Years              | 5/23/2013    | ssnape                     | Severus Snape          |                 |

**Let's take a look at the user  
experience...**

# LOGIN OVERLAY

# Hi, Sarah

## 1 Global navigation menu

Welcome to the new Blackboard!

Before you get started, we would like to show you the **new features** that we just added.

Use this menu to access:

- Courses
- Settings and more...
- Profile Posts
- People Updates

You are not currently enrolled in any courses.

## 2 Your new Blackboard profile

Your profile is private. <sup>?</sup> Personalize your profile and share it with other Blackboard users. Start with information from:



**I'll update it myself**  
Profile Picture, About, Email

I'll do it later

Are you a prospective student's parent? We have [useful information](#) for you, too!

Helpful Links

[Virtual Campus Tour](#)

[Registrar's Office](#)

Your Monument experience doesn't have to end at graduation. Make your class connections stronger, or build new ones, and get involved with the Monument Alumni Association. For more info, please contact us at [alumni@monument.edu](mailto:alumni@monument.edu) ... we look forward to hearing from you!

Upcoming Events

*Tomorrow:* Varsity Men's Basketball vs. Central State.

*This Friday Night:* Local young alumni happy hour.

*Next Monday:* Monthly Alumni Career webinar series.

Blackboard Help



**A school system is down?**  
Find who to contact.

Tools

Announcements

Calendar

Tasks

My Grades

Send Email

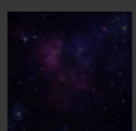
User Directory

Address Book

Personal Information

Goals

Institution News



New

[Student Orientation](#)  
We have

# GLOBAL NAVIGATION MENU

Add Module

Tools

[Announcements](#)

[Calendar](#)

[Tasks](#)

[My Grades](#)

[Send Email](#)

[User Directory](#)

[Address Book](#)

[Personal Information](#)

[Goals](#)

[Enterprise Surveys](#)

College Information

Contact us by telephone or mail

Monument University  
Main Campus  
37th and Sun Street  
Sunville, FL 50555  
(800) 555-1000

Blackboard Help



**A school system is down?**  
Find who to contact.



**Can't find your grades?**  
Find out why!



**Don't know what's due next?**

Find how Blackboard Notification Dashboard can help you.



**Want to know who else is using Blackboard?**

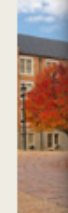
Find out who's online through Bb IM.



**Can't read content in your course?**

Find more information on your accessibility and accessible courses. Share with your teacher.

Prospect



here, v  
degree  
or cult

Are yo  
We ha

Helpful

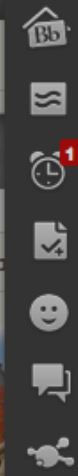
[Virtu](#)

[Regis](#)



Courses

- RECENTLY VISITED
- [Biological Science: Section B](#)
  - [Cinema as Art Form](#)
  - [Introduction to American History](#)
  - [Introduction to Journalism](#)



- Organizations
- Spaces
- Settings
- Home icon
- Help icon



# PROFILE CARDS

## Forum: Welcome and Introductions

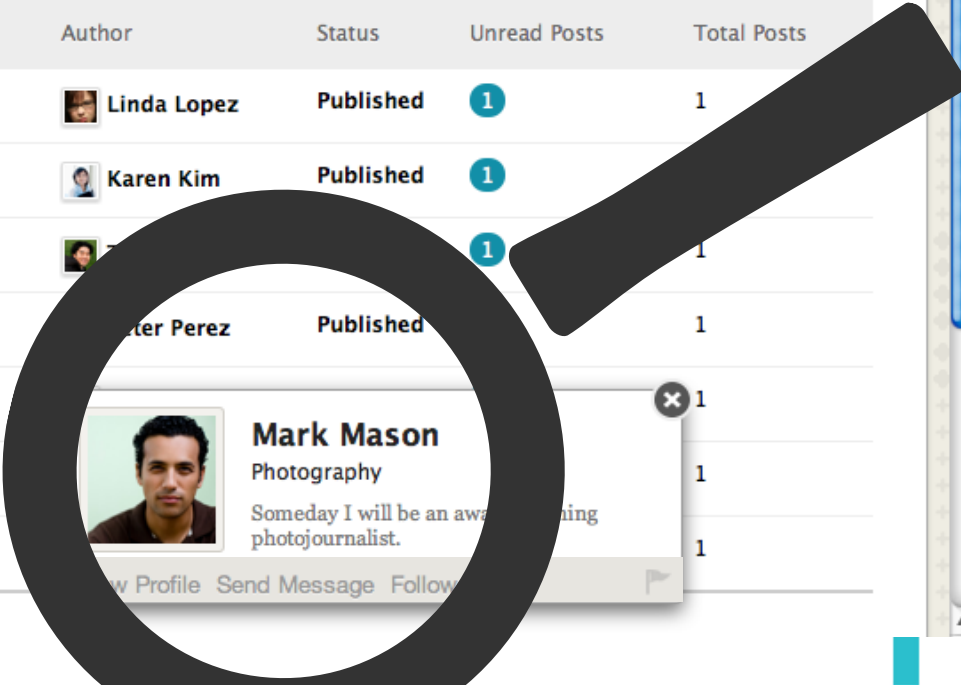
Organize Forum Threads on this page and apply settings to several or all threads. Threads are listed in a tabular format. The Threads can be sorted by clicking the column title or the caret at the top of each column. [More Help](#)

Create Thread

Search

Display

| <input type="checkbox"/> | Thread Actions | Collect | Date            | Thread                                        | Author       | Status    | Unread Posts | Total Posts |
|--------------------------|----------------|---------|-----------------|-----------------------------------------------|--------------|-----------|--------------|-------------|
| <input type="checkbox"/> |                |         | 1/7/12 3:22 PM  | <a href="#">Linda Lopez Introduction</a>      | Linda Lopez  | Published | 1            | 1           |
| <input type="checkbox"/> |                |         | 1/7/12 3:21 PM  | <a href="#">Hi. I'm Karen Kim</a>             | Karen Kim    | Published | 1            | 1           |
| <input type="checkbox"/> |                |         | 1/7/12 3:16 PM  | <a href="#">Tony Tran Introduction</a>        | Tony Tran    | Published | 1            | 1           |
| <input type="checkbox"/> |                |         | 1/7/12 3:15 PM  | <a href="#">Intro to Peter Perez</a>          | Peter Perez  | Published | 1            | 1           |
| <input type="checkbox"/> |                |         | 1/7/12 3:09 PM  | <a href="#">A Little Bit About Mark Mason</a> | Mark Mason   | Published | 1            | 1           |
| <input type="checkbox"/> |                |         | 1/7/12 3:07 PM  | <a href="#">Intro to Ryan Roberts</a>         | Ryan Roberts | Published | 1            | 1           |
| <input type="checkbox"/> |                |         | 9/28/05 2:07 PM | <a href="#">Sally Smith Introduction</a>      | Sally Smith  | Published | 1            | 1           |



# FULL PROFILES



## Mark Mason

Photography



Someday I will be an award-winning photojournalist.

Unfollow

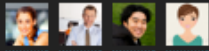
Send Message

Block Report

Mark Mason is not following you.

### Network

#### Followers



#### Following



### Mark Mason

NOV 8, 2012 - 6:05 PM

Does anyone have the notes from last Tuesday's Biology class? I can't find my notebook...

[View earlier comments](#)



### Mark Mason

NOV 8, 2012 - 6:13 PM

Thanks Tony! I keep meaning to break out my iPad for class, but I'm afraid I'll leave it sitting somewhere. Maybe I'll tether it to my wrist.



### Lisa Neal

NOV 8, 2012 - 6:14 PM

The iTether - hahaha! I think you've got a great Kickstarter project there, Mark!



### Michael Brady

NOV 8, 2012 - 6:21 PM

Tony, can I get a copy of your notes, too? I missed the part about biostasis.



### Sally Johnson

NOV 8, 2012 - 6:35 PM

I recorded the lecture, Mark - I'll send you a link.

Comment on this...

# PROFILE CREATION

## Blackboard Profile

Cancel

Save Edits

\* indicates a required field.

### Start with information from...



Facebook



Twitter

### Picture



Change Picture

\* How do you want your name displayed in your profile?

Sally Johnson

What are your studies?

Sports medicine

What would you like to do after graduation?

I've played tennis and lacrosse, and run track, since middle school. My dream is to participate in the track and field events at the Olympics as part of Team USA!

I've played tennis and lacrosse, and run track, since middle school. My dream is to participate in the track and field events at the Olympics as part of Team USA!

### Privacy Options

Anyone in your courses can view your profile card within the course (unless your status is Hidden). These privacy settings control who can search and browse for you on the People page.

Learn more about profile privacy settings.

#### Public (recommended)

Anyone with a Blackboard profile can find and message me.

Require others to request permission to follow me.

#### My School (recommended)

Anyone from my school can find and message me.

Require others to request permission to follow me.

### Facebook

Link up your Blackboard Profile with your Facebook Profile

- Copy Facebook picture
- Copy Facebook description
- Copy Facebook email

Cancel

Connect With Facebook

### Contact Information

\* Primary Email

A valid email address is required in order to save your Blackboard profile. This email address will not be displayed when others view your Blackboard profile.

sjohnson@monument.edu

✓ Verified

+

Preview My Profile Card

# PROFILE CREATION

Edit My Blackboard Profile

## Blackboard Profile

Cancel

Save Edits

\* indicates a required field.

Start with information from...



Facebook



Twitter

### Privacy Options

Anyone in your courses can view your profile card within the course (unless your status is Hidden). These privacy settings control who can search and browse for you on the People page.

Log into cloud.local



https://www.facebook.com/dialog/permissions.rec

Google

facebook



Sally Johnson

Learn more about how apps work now.



cloud.local

Log In with Facebook

Cancel

2 people use this app

#### ABOUT THIS APP

You are logging into cloud.local as **Sally Johnson**.

Who can see posts this app makes for you on your Facebook timeline: [?]

Public

#### THIS APP WILL RECEIVE:

- Your basic info [?]
- Your email address (sjohnson@myemail.com).
- About You

By proceeding, you will be taken to stack.cloud.local · Report App

A valid email address is required in order to save your Blackboard profile. This email address will not be displayed when others view your Blackboard profile.

sjohnson@monument.edu

✓ Verified



Sally Johnson

Sports medicine

I've played tennis and lacrosse, and run track, since middle school. My dream is to participate in the track and field events at the Olympics as part of Team USA!

Preview My Profile Card

# PROFILE CREATION

## Blackboard Profile

Cancel

Save Edits

\* indicates a required field.

Start with information from...



Facebook



Twitter

Picture



Change Picture

\* How do you want your name displayed in your profile?

Sally Johnson

What are your interests?

Sports

What would you like to do?

I've played tennis and lacrosse, and run track, since middle school. My dream is to participate in the track and field events at the Olympics as part of Team USA!

### Privacy Options

Anyone in your courses can view your profile card within the course (unless your status is Hidden). These privacy settings control who can search and browse for you on the People page.

Learn more about profile privacy settings.

Public (recommended)

Anyone with a Blackboard profile can find and message me.

Require others to request permission to follow me.

My School (recommended)

Anyone from my school can find and message me.

Require others to request permission to follow me.

### Twitter

Link up your Blackboard Profile with your Twitter Profile

Copy Twitter picture

Copy Twitter description

Cancel

Connect With Twitter

### Contact Information

\* Primary Email

A valid email address is required in order to save your Blackboard profile. This email address will not be displayed when others view your Blackboard profile.

sjohnson@monument.edu

✓ Verified



# PROFILE CREATION

## Blackboard Profile

Cancel

Save Edits

\* indicates a required field.

Start with information from...



Facebook



Twitter

Picture



Change Picture

\* How do you want to be found?

Sally Johnson

What are your interests?

Sports medicine

What would you like to share?

I've played tennis and lacrosse, and run track, since middle school. My dream is to participate in the track and field events at the Olympics as part of Team USA!

I've played tennis and lacrosse, and run track, since middle school. My dream is to participate in the track and field events at the Olympics as part of Team USA!

Contact Information

\* Primary Email

A valid email address is required for your profile. This email address will be used for your Blackboard communications.

sjohnson@monu.edu



### Privacy Options

Anyone in your courses can view your profile card within the course (unless your status is Hidden). These privacy settings control who can search and browse for you on the People page.

Learn more about profile privacy settings.

Public (recommended)

Anyone with a Blackboard profile can find and message me.

on to follow me.

message me.

on to follow me.

and spaces can find and

ion to follow me.

me.

ers.

arning spaces.

Twitter



Logged in as @RunningSally | sign out



Twitter

Link

Connect

Cancel

Connect **r5x64o11-vm023.pd.local** with your **@RunningSally** account to interact with your followers and share content through your timeline.

Connect

Cancel

By clicking "Connect" you agree to the [Twitter Terms of Service](#). In particular, some usage information will be shared back with Twitter. For more, see our [Privacy Policy](#).

Twitter will never share your password and you can always revoke **r5x64o11-vm023.pd.local**'s access through your settings page.



# EDIT PROFILE AND PRIVACY

Cancel

Save Edits

\* indicates a required field.

## Start with information from...



Facebook



Twitter

## Picture



Change Picture

\* How do you want your name displayed in your profile?

Sally Johnson

What are you studying?

Sports medicine

What would you like to share about yourself?

I've played tennis and lacrosse, and run track, since middle school. My dream is to participate in the track and field events at the Olympics as part of Team USA!

## Contact Information

\* Primary Email

A valid email address is required in order to save your Blackboard profile. This email address will not be displayed when others view your Blackboard profile.

sarah.johnson@monument.edu

✓ Verified



## Privacy Options

Anyone in your courses can view your profile card within the course (unless your status is Hidden). These privacy settings control who can search and browse for you on the People page.

[Learn more about profile privacy settings.](#)

### All Blackboard Users (recommended)

Anyone with a Blackboard profile can find and message me. This includes Blackboard users at other schools.

Require others to request permission to follow me.

### My School (recommended)

Anyone from my school can find and message me.

Require others to request permission to follow me.

### Private

Everyone must request permission to follow me.

Anyone in my courses, organisations, and spaces can find and message me.

### Hidden

No one can view, message, or follow me.

I cannot view, message, or follow others.

I choose not to participate in social learning spaces.

[Delete My Blackboard Profile](#)

**Sally Johnson**

Sports medicine

I've played tennis and lacrosse, and run track, since middle school. My dream is to participate in the track and field events at the Olympics as part of Team USA!

Preview My Profile Card

# PROFILES EVERYWHERE

## Forum: Welcome and Introductions

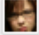






Organize Forum Threads on this page and apply settings to several or all threads. Threads are listed in a tabular format. The Threads can be sorted by clicking the column title or the caret at the top of each column. [More Help](#)

Create Thread

Search

Display ▾

Thread Actions ▾ Collect

| <input type="checkbox"/> | Date ▾          | Thread                                        | Author                                                                                            | Status    | Unread Posts | Total Posts |
|--------------------------|-----------------|-----------------------------------------------|---------------------------------------------------------------------------------------------------|-----------|--------------|-------------|
| <input type="checkbox"/> | 1/7/12 3:22 PM  | <a href="#">Linda Lopez Introduction</a>      |  Linda Lopez    | Published | 1            | 1           |
| <input type="checkbox"/> | 1/7/12 3:21 PM  | <a href="#">Hi. I'm Karen Kim</a>             |  Karen Kim      | Published | 1            | 1           |
| <input type="checkbox"/> | 1/7/12 3:16 PM  | <a href="#">Tony Tran Introduction</a>        |  Tony Tran     | Published | 1            | 1           |
| <input type="checkbox"/> | 1/7/12 3:15 PM  | <a href="#">Intro to Peter Perez</a>          |  Peter Perez  | Published | 1            | 1           |
| <input type="checkbox"/> | 1/7/12 3:09 PM  | <a href="#">A Little Bit About Mark Mason</a> |  Mark Mason   | Published | 1            | 1           |
| <input type="checkbox"/> | 1/7/12 3:07 PM  | <a href="#">Intro to Ryan Roberts</a>         |  Ryan Roberts | Published | 1            | 1           |
| <input type="checkbox"/> | 9/28/05 2:07 PM | <a href="#">Sally Smith Introduction</a>      |  Sally Smith  | Published | 1            | 1           |

Thread Actions ▾ Collect



# LIFELONG PROFILES



## Edit My Blackboard Profile

Cancel Submit

\* indicates a required field.

### Primary Email Address

Your Blackboard profile uses your email address to connect your Blackboard institution accounts and your Blackboard services to a single profile. If you have used one of these services before, use the same email address here.



For new profiles, we recommend using an email address that you will always have access to when you change schools or jobs. You can change this email address at any time by editing your Blackboard profile.

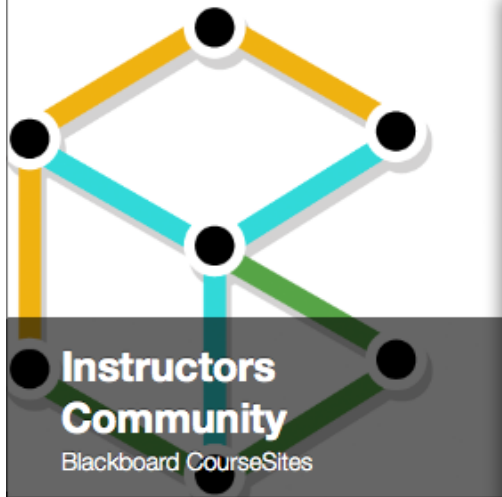
**My Primary Email Address**

When you submit your Blackboard profile with this email address, we will send you a verification email.

Cancel

Submit

# LIFELONG PROFILES + COURSESITES™



Gathering instructors together for best practices, teaching and learning from one another.

[Edit Space](#)

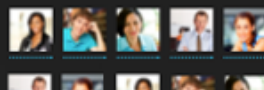
[Report](#) [Leave](#) [Delete](#)

## Space Membership

Managers



Members



My CourseSites Accessibility 101 Resources Content Collection System Admin

Share Something...

Post



[Joan Wallister](#)

FEB 11, 2013 - 1:54 PM

I picked up my iPad a couple of days ago and I am very surprised to its ease of use. I already see the opportunities ahead to create the synergy and stimulating environment in the classroom our students deserve and at times demand from educators. Thank you for sharing your ideas and for all that you do.....hooahhh!



[Beth Carlson](#)

FEB 11, 2013 - 1:51 PM

Hey Everyone! I'm so glad this space is here for us to collaborate! I am fairly new to CourseSites and I'd like the insider's view... what has your experience been like using this system for your classes?



[Sarah Saggan](#)

EDITED FEB 11, 2013 - 2:01 PM

I love CourseSites; the features, tools, resources, and brief videos with clear and easy instructions. I think CourseSites will be beneficial, rewarding, and interesting. This site provides and promotes interactions with students and other instructors.



[Alastair Gorgham](#)

FEB 11, 2013 - 1:56 PM

Hi all! I have joined course sites as both a student in a course on mobile learning

# MY BLACKBOARD: POSTS

## Posts

All @me Custom



**Susan Brown** Commented on thread 17 hours ago  
RE: Marshfield Wetlands Site Visit Discussion

I expected the environmental transitions in the wetlands to be more obvious than they were when w...

In Forum Week 1 Discussion in *Biological Science* : Section B



**Susan Brown** Commented on thread 17 hours ago  
RE: Biology in the News

In this report from e! Science News, NYU reports that research have uncovered new ways our biolog...

In Forum Week 1 Discussion in *Biological Science* : Section B



**Beth Carlson** Created Thread 17 hours ago  
Biology in the News

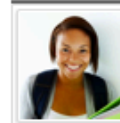
Students, please post a unique concept this week on something about Biology that you find in the ...

Biological Science: Section B

October 4, 2012 4:53 PM

## RE: Marshfield Wetlands Site Visit Discussion

Posted by [Susan Brown](#) on [Week 1 Discussion](#) Discussion forum.



I expected the environmental transitions in the wetlands to be more obvious than they were when we visited. I think that is one of the reasons these types of things get a lot of attention in politics -- it's hard to actually see it in action, so people might think its not really a problem.

Reply

Quote

# MY BLACKBOARD: UPDATES



## Updates

All

### COURSES WITH UPDATES

[Cinema as Art Form](#)

[Introduction to American History](#)

[Introduction to Journalism](#)

[Student Council](#)

### ANNOUNCEMENTS

[Course Announcement](#)

All



Survey [CAS - End of Term Evaluation](#) has been made available for Cinema as Art Form. Please click the link to submit the survey. Only one submission will be accepted per respondent. 0 minutes ago

Announcement **First meeting of the Student Council Available** 10 minutes ago

Content **Independent Viewing - Reviews Available** 39 minutes ago  
In *Cinema as Art Form*

Course Announcement → *Introduction to American History* 1 hour ago

**Reminder - No Class on Monday, October 8**  
A Reminder that we will not have class on Monday, October 8 since it is a holiday. Enjoy the extra studying time!

Course Announcement → *Introduction to Journalism* 1 hour ago

**Reminder about project draft deadline**  
Hello class - just a quick reminder that project drafts will be due on **Thursday** next week, instead of Friday. If this presents a problem, please contact me directly (email is best).

Thanks,  
Prof. Stephens

# MY BLACKBOARD: GRADES



## My Grades

Date Course

**A** Current Grade (Total)  
In *Biological Science: Section B*

4 days ago

**C+** Current Grade (Total)  
In *Cinema as Art Form*

4 days ago

**A+** Current Grade (Total)  
In *Introduction to Journalism*

5 days ago

**B+** Current Grade (Total)  
In *Introduction to American History*

5 days ago

Biological Science: Section B

October 8, 2012 5:33 PM

## Biological Science: Section B

### CALCULATED GRADES

#### final grade

|       |          |                           |                         |
|-------|----------|---------------------------|-------------------------|
| Grade | <b>A</b> | <b>122.71%</b><br>Average | <b>92.85%</b><br>Median |
|-------|----------|---------------------------|-------------------------|

[Grading Criteria](#)

#### Running Total

Grade **24.02%**

[Grading Criteria](#)

#### Weighted Total

Grade **95.83%**

[Grading Criteria](#)

### GRADED

Ocean Salinity Analysis

Oct 8, 2012 5:33 PM

# MY BLACKBOARD: CALENDAR

## Calendar

October 2012

| Su | Mo | Tu | We | Th | Fr | Sa |
|----|----|----|----|----|----|----|
|    | 1  | 2  | 3  | 4  | 5  | 6  |
| 7  | 8  | 9  | 10 | 11 | 12 | 13 |
| 14 | 15 | 16 | 17 | 18 | 19 | 20 |
| 21 | 22 | 23 | 24 | 25 | 26 | 27 |
| 28 | 29 | 30 | 31 |    |    |    |

### Calendars

- Institution
- Personal
- Biological Sciences
- Introduction to American History
- Introduction to Journalism
- Cinema as Art Form

iCalendar

Get External Calendar Link

Today ◀ ▶ Oct 7 — 13 2012 Create New Event

|         | SUN<br>10/7 | MON<br>10/8               | TUE<br>10/9                | WED<br>10/10              | THU<br>10/11             | FRI<br>10/12 | SAT<br>10/13 |
|---------|-------------|---------------------------|----------------------------|---------------------------|--------------------------|--------------|--------------|
| All Day |             | Lab Due To                |                            |                           | Topic Due to             |              |              |
| 1pm     |             |                           | 1:00 - 2:25<br>CAF class   |                           | 1:00 - 2:25<br>CAF Class |              |              |
| 2pm     |             |                           | =                          |                           | =                        |              |              |
| 3pm     |             | 2:30 - 4:05<br>American H |                            | 2:30 - 4:05<br>American H |                          |              |              |
| 4pm     |             | =                         |                            |                           |                          |              |              |
| 5pm     |             |                           |                            | 5:00 - 8:00<br>Essay 1 Du |                          |              |              |
| 6pm     |             |                           |                            |                           |                          |              |              |
| 7pm     |             |                           |                            |                           |                          |              |              |
| 8pm     |             |                           | 8:00 - 10:30<br>Watch Taxi |                           |                          |              |              |



# MY BLACKBOARD: PEOPLE



## People

2 Follow Requests

[All Profiles](#)

**My Learning Network**

### MY INSTITUTION

▼ **Monument University**

[Monument University Directory](#)

[Cinema as Art Form](#)

[Introduction to American History](#)

[Introduction to Journalism](#)

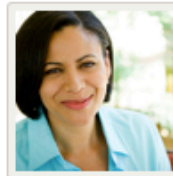
[Biological Science: Section B](#)

### CONNECTIONS

[I'm Following](#)

## My Learning Network (43)

Enter first name or last name



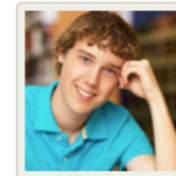
Arly Brown



Beth Carlson



Brad Barnes



Chuck Finley



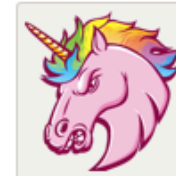
Dan Rinzel



Elaine Miller



Elle Walker



Ellie Smith



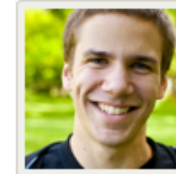
Frank Fields



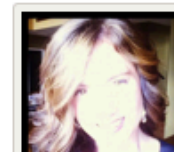
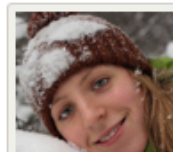
Frank Jones



Jake McLean



Jeremy Jones



# MY BLACKBOARD: SPACES



## Spaces

3 Invitations 3 Join Requests

Create a Space

### My Spaces

#### My Spaces

- [Biology Study Group](#)
- [Campus Foodies](#)

#### Categories







- [Campus Life](#)
- [Club](#)
- [Course](#)
- [Organization](#)
- [Study Group](#)
- [Tutoring](#)

## My Spaces

|                                                                                                       |                                                                                                                         |
|-------------------------------------------------------------------------------------------------------|-------------------------------------------------------------------------------------------------------------------------|
|  <b>Math Society</b> |  <b>Computer Science 415 Project</b> |
|-------------------------------------------------------------------------------------------------------|-------------------------------------------------------------------------------------------------------------------------|

LATEST ACTIVITY

ALPHABETICAL

|                                                                                                                         |                                                                                                                                     |
|-------------------------------------------------------------------------------------------------------------------------|-------------------------------------------------------------------------------------------------------------------------------------|
|  <b>Chocolate Lover Club</b>           |  <b>Biology Study Group</b>                      |
|  <b>Monument: Modern Architecture</b> |  <b>State Community College: Urban Planning</b> |
|  <b>Tennis Group</b>                 |  <b>Final Project Team</b>                     |



# MY BLACKBOARD: SPACES

Share Something...



**Stan Phillips**

OCT 1, 2012 - 8:00 AM

Can anyone remember the name of the thing where you start with a grid, then for each of the vertical and horizontal lines directly between two dots you draw one with probability  $p$ , and the resulting shape tends to coagulate with  $p \sim 0.7$  but is highly fragmented for smaller  $p$ ?



**Sullivan Vinnie**

OCT 1, 2012 - 9:01 AM

I'm not really sure of the result but it sounds a lot like something from percolation theory.



**Lloyd Elihu**

OCT 1, 2012 - 9:00 AM

Well it seems to me like you mean percolation on the lattice, but in that case the critical probability is 0.5.

Comment on this...



**Brad Miraglia**

SEP 20, 2012 - 8:00 AM

Hi, I am trying to find the probability of the permutation of correlated random variables. The problem is: Let  $X_i$  be correlated normal distributed random variables,  $i=1,2,3$ , what is the probability of  $X_1 > X_2 > X_3$ ? Does anyone know any idea about how to solve? Many thanks!



**Katharine Ansel**

SEP 9, 2012 - 8:00 AM

Consider the relation  $A = \{(x, y) \in \mathbb{N} \times \mathbb{N} : |x| \leq |y|\}$ . Is this relation:

- (a) reflexive?
- (b) symmetric?
- (c) transitive?

In each case explain your answer.



**Brad Miraglia**

OCT 1, 2012 - 10:00 AM

- a)  $\forall n \in \mathbb{N} \quad (n, n) \in A$  so this relation is indeed reflexive.
- b) The relation is not symmetric, take  $x=1, y=2 : |x| < |y|$  but  $|y| > |x|$ .

## Math Society

A public space

MATH INTEREST

This is a club for those who are passionate about math. All are welcome!

Members (25)



Report this space Leave this space

# MY BLACKBOARD: MESSAGES



## Messages

New Message



**Rob Petrie**

Oct 8, 2012 - 11:34 AM

Yeah, but I'm not sure if I did it right.  
Can we talk after class tomorrow?



**Patty Lane**

Oct 8, 2012 - 11:31 AM

I think he said he'd be in there later this  
afternoon, around 4.



**Marcus Rossi**

Oct 8, 2012 - 11:30 AM

Thanks Sally!

## Patty Lane ↔ You

Delete Conversation



**You said:**

Oct 8, 2012 - 11:27 AM

Hey Patty - fyi, we had a pop quiz in  
Chem lab today. Not sure if Anderson  
will let you make it up, but it's worth  
a try.



**Patty Lane said:**

Oct 8, 2012 - 11:30 AM

Yeah, thanks Sally - I ran into Arly  
this morning and she already told me.  
Do you know when Anderson's office  
hours are?



**You said:**

Oct 8, 2012 - 11:31 AM

I think he said he'd be in there later  
this afternoon, around 4.

Write a reply

Reply



# MY BLACKBOARD: OVERVIEW

Blackboard Learn

Sarah Johnson 1

My Monument Courses Community Content Outcomes

**1** June 2012

ALL ▾

Past Due

- Group Lab** Late 3 days  
MA-774
- Chapter 18 Practice Test** Late 5 days  
MA-774

Due Today

Nothing is due today.




Due This Week

- Chapter 1 Quiz** Due July 12  
MA-774
- Chapter 2 Homework** Due July 25  
MA-774
- Lab 4 Notes** Due August 4  
MA-774

Recently Graded

- VIEW** **Chapt 5-7 Exam** MA-774 March 12, 2012 8:00:12AM
- VIEW** **Week 17 Quiz** MA-774 March 12, 2012 8:00:12AM
- VIEW** **Chapt 5-7 Exam** MA-774 March 12, 2012 8:00:12AM

Stream Activity

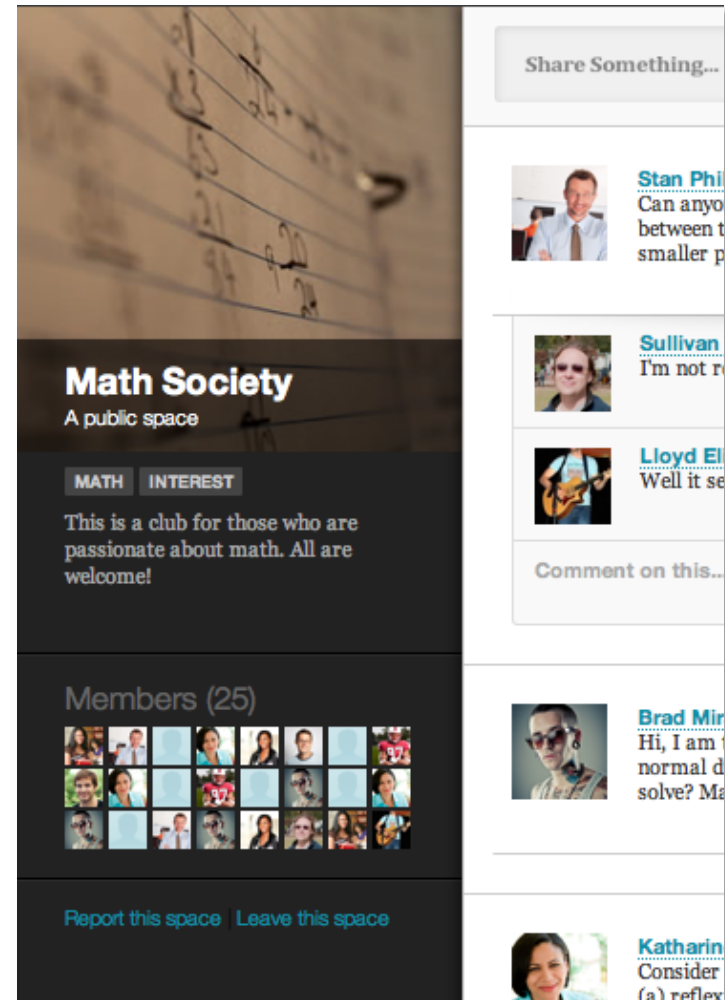
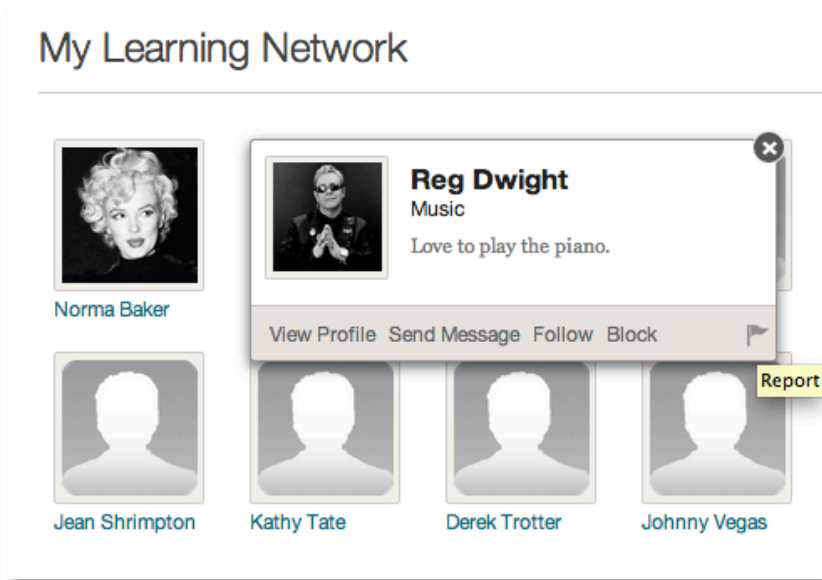
-  **Curtis Maxwell** commented on **nature is key on Nature vs. Nurture discussion** 1m  
“ I completely agree with your assessment of nature, but have a few questions about whether  
PSYCH301
-  **Brad Miraglia** posted **nature is key on Nature vs. Nurture discussion** 20m  
“ Today developmental psychologists rarely take such extreme positions with regard to most aspects  
PSYCH301
-  **Curtis Maxwell** posted **My Thoughts in Love English Lit blog** 1h

# Let's take a look at the admin experience...



# MY BLACKBOARD: REPORTING

- Report flags are available for Profiles and Spaces



# MY BLACKBOARD: REPORTING



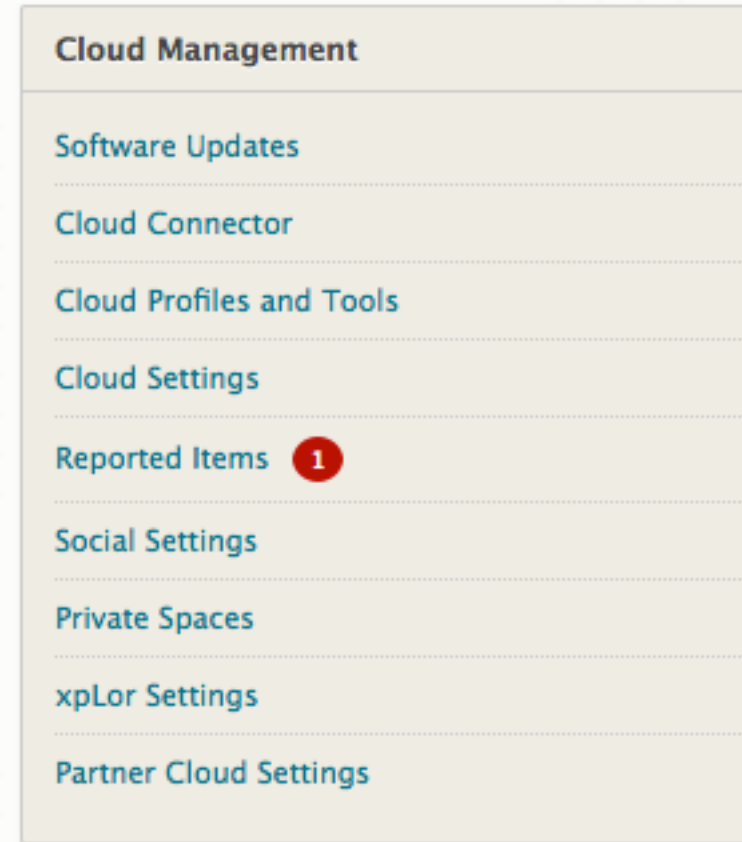
The screenshot shows the Blackboard 'People' interface. On the left is a navigation sidebar with icons for home, search, institutions, connections, and messages. The main area is titled 'My Learning Network' and shows a list of profiles. A modal window titled 'Report a Profile' is open over the profile of 'Reg Dwight'. The modal contains a form with the following elements:

- Report a Profile** (Title)
- Use this form to report inappropriate content in this space to System Administrators.
- \* indicates a required field.
- Profile card for **Reg Dwight** (with a small profile picture).
- Form section: **\* I want to report inappropriate content in this profile.** with radio buttons for:
  - Avatar
  - Name
  - Profile Description
  - Other
- Form section: **\* Reason for reporting** with a text area containing 'His name is Elton John|' and a character count '22 / 250 characters'.
- Buttons: **Cancel** and **Submit**.
- Disclaimer: 'The system will never share your identity with the owner of the reported profile.'



## MY BLACKBOARD: MONITORING / MANAGEMENT

- Reporting a Profile or Space generates an alert for the System Admin



# MY BLACKBOARD: MONITORING / MANAGEMENT



## Reported Items

### Reported Items

This is a list of items that have been reported as having inappropriate or offensive content. Move your cursor over the item reported to review the content. Click the Action Link beside each item reported to review the report and block the item. Blocking the item hides it from view. An email is sent to the owner of the blocked item informing them that they need to revise the item and resubmit it for review.

Filter Status

| Item Reported              | Type    | Status   | Updated    |
|----------------------------|---------|----------|------------|
| <a href="#">Reg Dwight</a> | Profile | Reported | 03-02-2014 |

- Displaying 1 to
- View Report Details
  - Block Item
  - Delete Report



# MY BLACKBOARD: MONITORING / MANAGEMENT



Reported Items

## Reported Items

This is a list of items that have been reported to review the item and resubmit it for review.

Filter Status **Reported**

Item Reported

Reg Dwight

Displaying 1 to 1 of 1 items

### Reg Dwight

| Reported By | Date Reported | Content Reported | Comments               | Date Resolved |
|-------------|---------------|------------------|------------------------|---------------|
| Norma Baker | 03-02-2014    | Name             | His name is Eiton John |               |

Displaying 1 to 1 of 1 items

OK

# MY BLACKBOARD: MONITORING / MANAGEMENT



## Reported Items

This is a list of items that have been reported as having inappropriate or offensive content. Move your cursor over the item reported to review the content. Click the Action Link beside each item reported to review the report and block the item. Blocking the item hides it from view. An email is sent to the owner of the blocked item informing them that they need to revise the item and resubmit it for review.

Filter Status Reported

Item Reported

Reg Dwight

Displaying 1 to 1 of 1 items

Updated

03-02-2014

### Block Profile: Reg Dwight?

Blocking this profile will make it temporarily inaccessible to other users. Reg Dwight will be notified and given the chance to submit their profile for review and unblocking.'

We're sorry to tell you this...

Your Blackboard profile has been blocked due to inappropriate content.

What does that mean?

Your Blackboard profile page is temporarily inaccessible to other users. Also, your profile card displays only a default avatar image and your full name as it appears in Blackboard Learn.

You will not be able to interact with other users at this institution through

Cancel

Block

# MY BLACKBOARD: SUBMITTING FOR REVIEW



Reggie Dwight 2

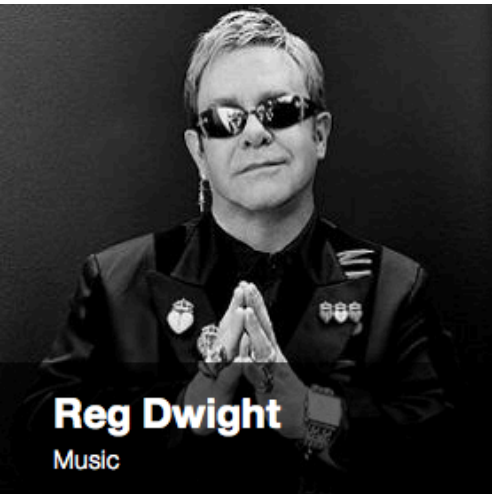
Home Courses Organisations Content Collection

Your profile has been blocked by an administrator for having inappropriate content. Please edit your profile and then click the "Submit For Review" button.

Share Something... Post

**Reg Dwight**  
Music

# MY BLACKBOARD: SUBMITTING FOR REVIEW



**Reg Dwight**  
Music

Love to play the piano.

[Preview My Profile Card](#)

## Edit My Blackboard Profile

Cancel

Submit For Review

\* indicates a required field.

Your profile has been blocked by an administrator for having inappropriate content. Please edit your profile and then click the "Submit For Review" button.

Start with information from...



Facebook



Twitter

Picture



Change Picture

\* How do you want your name displayed in your profile?

Reg Dwight

## Privacy Options

Anyone in your courses can view your profile card within the course (unless your status is Hidden). These privacy settings control who can search and browse for you on the People page.

[Learn more about profile privacy settings.](#)

### All Blackboard Users (recommended)

Anyone with a Blackboard profile can find and message me. This includes Blackboard users at other schools.

Require others to request permission to follow me.

### My School (recommended)

Anyone from my school can find and message me.

# MY BLACKBOARD: SUBMITTING FOR REVIEW



Reported Items

## Reported Items

This is a list of items that have been reported as having inappropriate or offensive content. Move your cursor over the item reported to review the content. Click the Action Link beside each item reported to review the report and... An email is sent to the owner of the blocked item informing them that they need to revise the item and resubmit it for review.

Filter Status **Under Review** Filter

| Item Reported | Type    | Status       | Updated    |
|---------------|---------|--------------|------------|
| Reg Dwight    | Profile | Under Review | 03-02-2014 |

Displaying 1 to 1 of 1 items



# Questions?